

2014 ANNUAL REPORT



COTTON
ELECTRIC CO-OP

A Touchstone Energy® Cooperative



Member-driven tasks dominate cooperative year

Cooperative members are always the driving force behind the day-to-day operations at Cotton Electric. As the months passed during 2014, the co-op's employees carried out member-driven tasks, launched features designed for members' ease of use and encouraged members to become involved in matters ranging from performance ratings to how this nation will generate power well into the future.

Bitter cold early in the year meant an increased demand for power as heating systems struggled to keep Cotton Electric members warm. Record-breaking demand resulted in high bills, not just for Cotton Electric members but all power users in the deep freeze of the United States during winter 2013-14. Cotton Electric employees double-checked calculations and meters to assure members were not overcharged.

Cotton Electric served as a resource for members seeking solutions and remedies against future spikes in energy consumption. Employees traveled to member homes, performing more than 100 energy audits, a few of which included blower door and duct blaster tests. Some members installed high-efficiency heat pumps and water heaters, encouraged by co-op rebates.

Early in the year, the co-op introduced a new number for members to call to make payments over the phone. By calling 1-855-730-8711, a member can make a payment from a checking account or credit or debit card. Members can also use this number to check the status of a Cotton Electric account.

The automated system was the first of several new features launched during the course of the year. Following the roll-out of a new website design, optimized for mobile devices, members were presented with SmartHub, a way for members to manage Cotton Electric accounts either through CottonElectric.com or via a free smart phone app. Using SmartHub, members can monitor power consumption and compare it to past use, make payments and contact the cooperative.

As temperatures warmed, members were offered a seasonal rebate for HVAC tune-ups. Also in the spring, the right-of-way department underscored its mission to find good ways for trees and electric service to co-exist by hosting an Oklahoma Forestry Services seedling sale.

Right-of-way clearing is a year-round project for Cotton Electric and 2014 was no different. The spraying season, however, was shortened by a fourth summer of severe drought.



Tim McCary



Warren Langford

Summertime is when Cotton Electric's tradition of supporting youth programs really shines. The season kicks off with Energy Camp and Cotton was represented by eighth-grade children of members: Toby Denny, Randall Higdon and Cassidy Randall, all of Chattanooga; Cy Ulloa and Naomi Robinson, both of Indianoma; Devin Mitchell of Comanche; Kimberly Spoonmore of Waurika; and Shalyn Bowles of Geronimo.

Four area high school juniors won an all-expense paid trip to Washington, D.C. Cotton was represented on the 2014 Youth Tour by Shayla Barber of Marlow, Kaitlyn Metcalfe of Walters, and Alexis Matallana and Kristian Cárdenas of Lawton.

Members gave Cotton Electric high marks in a survey conducted by TSE Services. The score





of 85 on the American Customer Satisfaction Index was 10 points higher than the average investor-owned utility and compared favorably to other Touchstone Energy co-ops.

Cotton Electric earned three awards in the annual communication contest sponsored by the Oklahoma Association of Electric Cooperatives. The revamped website earned an Award of Merit. A Simple Savings column discussing emergency heat settings received an Award of Excellence, as did the content of the July 2014 issue of *The Current*.

Members continued to support area needs through Operation Round Up. Total funds distributed through Cotton Electric Charitable Foundation hit and passed the three-quarter million mark with the issuance of grants over the summer. Another milestone was the 10-year mark. In a decade, CECF had issued 343 grants in amounts ranging from \$100 to \$10,000.

CECF issued 40 grants totaling \$98,463 during FY 2014-15. The 2014 Summer Classic golf tournament fielded a record-breaking 30 teams and added some \$10,000 to funds available for grants.

Further support in the form of taxes went to area education efforts. More than \$2.3 million in gross receipts tax funds were distributed among 31 schools served by Cotton Electric.

Cotton Electric employees bid farewell to three longtime employees: Gary Nichols, Dwight Hawkins and Ronnie Jones. Between them, they served the cooperative membership for 122 years. The year ended on a somber note with the passing of lifelong Cotton Electric member and longtime trustee Marvin Scherler.

Members in Districts 2, 6 and 8 held triennial business meetings. Ken Layn, Tommy Jones and Dewayne High, all members from those districts, were held over as trustees. The co-op held its annual membership meeting in late September in Lawton. There were 631 members present, 135 short of a 5 percent quorum.

During the course of the year, the co-op's Board of Trustees determined the co-op was financially strong and elected to return \$300,000 in capital credits to members.

Nothing is more important than our environment and federal policies drove a call to action issued by cooperatives across the country. Cotton Electric members were urged to contact senators and state representatives on the issue of EPA regulations targeting the nation's fuel mix. Proposals to set stringent limits on carbon dioxide emissions threatened the use of coal as a potential fuel source at future power plants. If coal is to be eliminated, legislators were asked to compare the suspected environmental benefit to the certain increase in power bills.

Cotton Electric CEO Warren Langford reminded members that we should learn from history. He cited a perceived natural gas shortage in 1978, which prompted Congress to amend the existing National Energy Act. The resulting amendment prohibiting natural gas as a fuel source for new generating plants did not consider the financial impact. The cost of building new coal plants was passed to ratepayers and Cotton Electric members in the 1980s saw a dramatic increase in power bills. Clearly the 1978 decision was based on political pressure and not scientific fact.

Langford and other co-op leaders cautioned new EPA regulations would narrow options, leaving the power industry vulnerable to more volatile fuel markets. Ultimately, they warned, the result could be very high power bills.

The members of Cotton Electric Cooperative support workable/scientific solutions that will ensure a clean atmosphere for future generations. We're not sure if these new regulations fit either criteria and we urge further examination.

The purpose of Cotton Electric Cooperative has not changed. Members want quality electric service at the lowest possible rate. Members want the co-op to give back to the community. These remained our goals throughout 2014.

It was not too much to ask. After all, it is what our members deserve.

Cotton Electric Cooperative

BOARD OF TRUSTEES



District 1
Shan Files
Asst. Sec./Treas.



District 2
Ken Layn
Secretary/Treasurer



District 3
Charles Spencer



District 4
Brian DeMarcus



District 5
Tim McCary
President



District 6
Tommy Jones



District 7
Steve Robinson



District 8
Dewayne High



District 9
Ronnie Bobot
Vice President

Dedication and experience

Cotton Electric Cooperative's Board of Trustees has a fiduciary responsibility for the governance of the cooperative and its subsidiary, serving to oversee and shape policy and keep the co-op and its subsidiary on a steadfast, focused course.

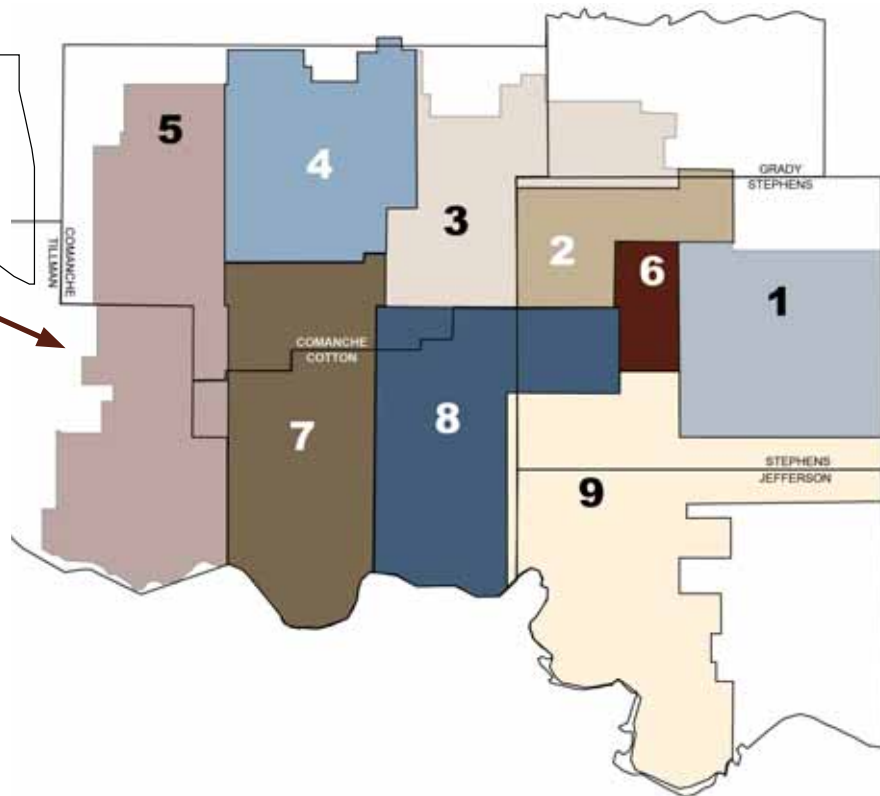
Your trustees are a dedicated, experienced group of professionals who share in an abiding loyalty for, and commitment to, the members throughout our eight-county service area. They act on behalf of you, our members, carrying out their principal responsibility to evaluate and create policies to ensure your cooperative provides safe, affordable and reliable service; all while adhering to our core value ... to strengthen the communities we serve.

Cotton Electric Cooperative SERVICE AREA

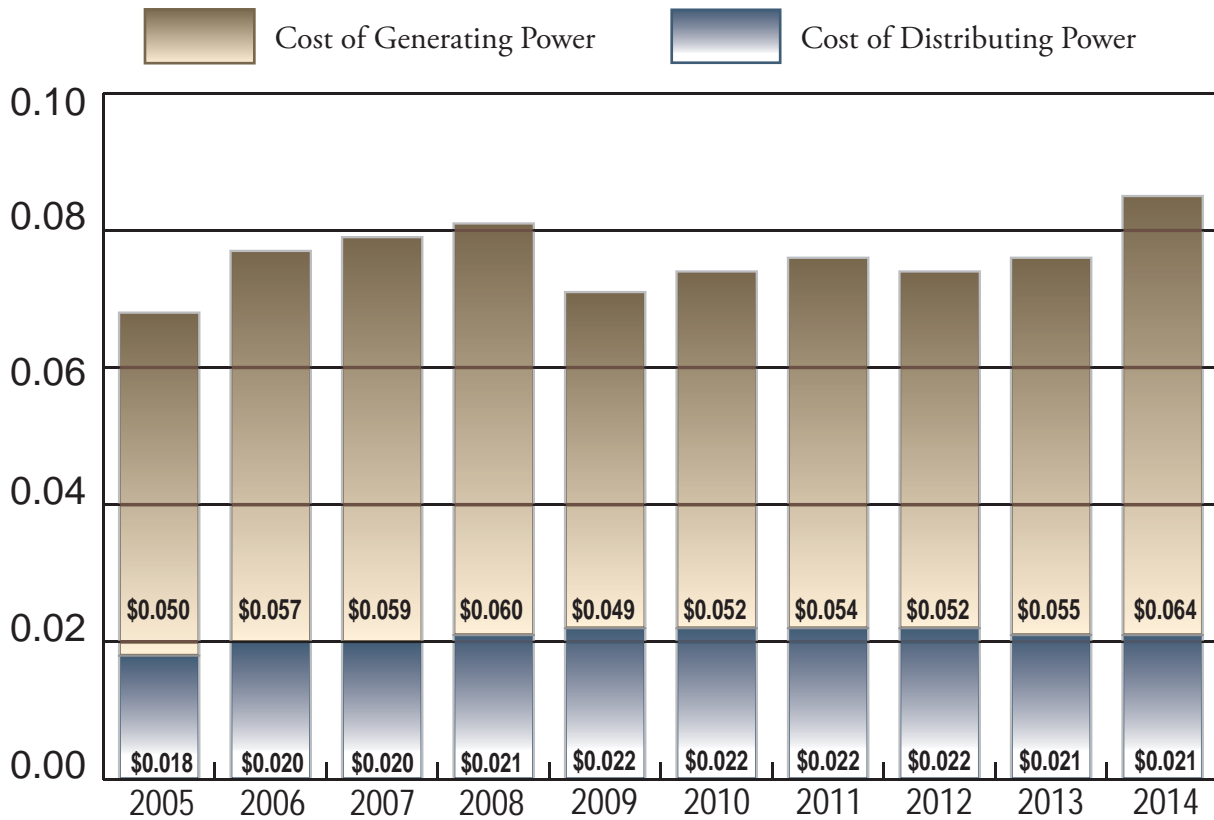
Cotton Electric Cooperative provides electric service to some 22,000 meters in eight counties of southwest Oklahoma. Cotton Electric was organized in 1938 to provide electric services to rural areas at a time when other utilities did not consider it economically feasible. Over the course of 77-plus years, the cooperative has steadily grown while continuing to meet the changing needs of its member/consumers.

The member/consumers of Cotton Electric own the cooperative's electric system and have an active voice in business matters. Combined with the many services offered, a local dispatcher is always on duty to assist with any unexpected problems occurring after normal working hours.

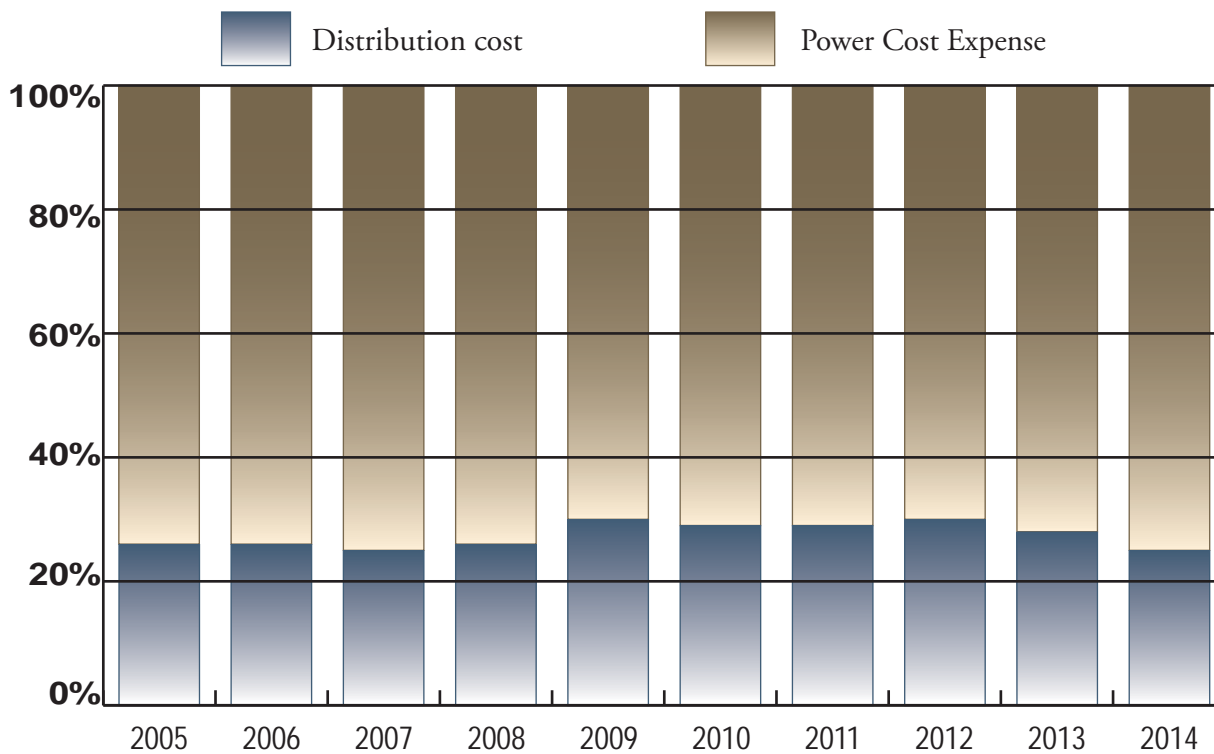
Our headquarters is located at 226 North Broadway in Walters and a branch office at 1101 West Oak in Duncan.



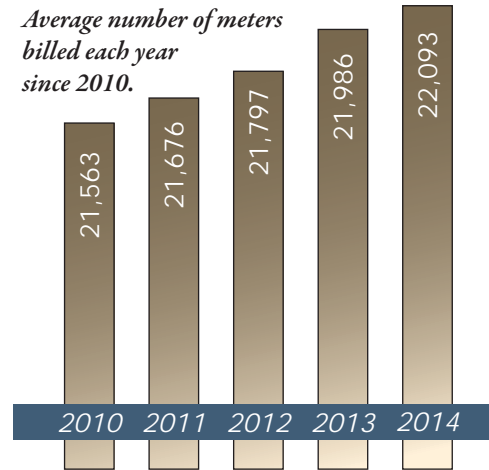
Total Average Cost Per kWh Purchased



Percent of Total Cost

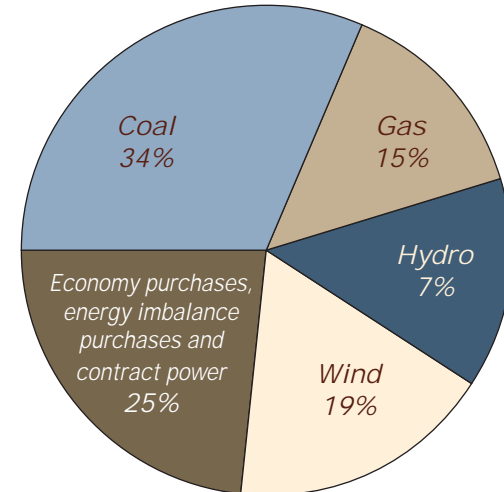


Cotton Electric Cooperative GROWTH RATE

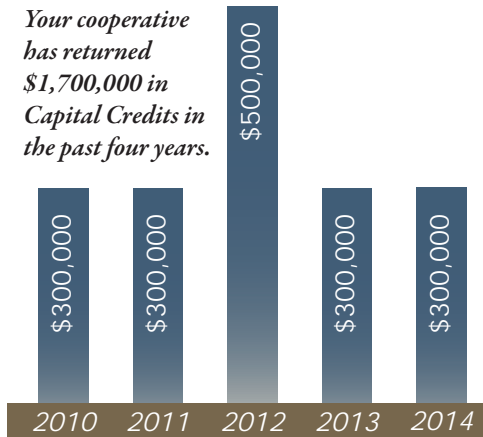


Western Farmers Electric Cooperative FUEL MIX

Our power provider's generation portfolio includes a variety of sources.



Capital Credit REFUNDS 2010-2014



BALANCE SHEETS *Consolidated**As of December 31, 2014*

	2014	2013
ASSETS		
Utility Plant		
Electric Plant in Service	121,617,128	115,904,125
Construction Work in Progress	1,086,665	1,142,786
Total Utility Plant, at cost	122,703,793	117,046,911
Less Accumulated Depreciation	34,674,141	34,177,166
Net Utility Plant	88,029,652	82,869,745
Non-utility plant		
Non-utility Plant	288,013	323,523
Less Accumulated Depreciation	230,830	246,894
Total Non-utility Plant	57,183	76,629
Other Property and Investments		
Investment in Associated Organizations	29,282,739	25,065,479
Notes Receivable less current portion	152,432	170,829
<i>Total Other Investments</i>	29,435,171	25,236,308
Current Assets		
Cash & Cash Equivalents	1,161,922	2,439,224
Accounts Receivable less doubtful accounts	3,055,643	2,250,583
Unbilled Revenue	5,901,128	6,312,428
Materials and Supplies	1,390,125	1,426,514
Other Current and Accrued Assets	79,630	444,812
<i>Total Current Assets</i>	11,588,448	12,873,561
Deferred Debits	2,715,547	3,054,991
TOTAL ASSETS	131,826,001	124,111,234
LIABILITIES AND MEMBERS' EQUITY		
Equities and Margins		
Memberships	117,640	118,735
Patronage Capital	55,768,072	51,092,403
Accumulated other comprehensive income	1,203,660	1,222,527
Other Equities	7,468,740	6,999,871
<i>Total Equities and Margins</i>	64,558,112	59,433,536
Long-term Debt		
Long-term Debt less Current Maturities	49,531,759	48,281,168
Other Non-current Liabilities	5,067,391	5,093,379
<i>Total Long-term Liabilities</i>	54,599,150	53,374,547
Current Liabilities		
Current Maturities of Long-term Debt	3,219,000	3,075,000
Line of Credit	1,650,416	-
Account Payable	5,419,700	5,841,730
Consumer Deposits	1,032,186	1,052,671
Other Current and Accrued Liabilities	1,026,273	1,077,739
<i>Total Current Liabilities</i>	12,347,575	11,047,140
Deferred Credits	321,164	256,011
TOTAL LIABILITIES AND EQUITY	131,826,001	124,111,234

**Consolidated Statement of
Revenue, Patronage Capital &
Comprehensive Income**

	2014	2013
Operating Revenues	75,067,111	66,249,433
Operating Expenses		
Cost of Power	54,405,248	45,951,455
Distribution Expense - Operations	3,050,663	2,706,575
Distribution Expense - Maintenance	3,895,949	3,800,000
Consumer Accounts	1,621,351	1,533,008
Customer Service and Information	164,684	150,632
Sales Expense	522,702	550,104
Administrative and General	1,506,394	1,448,932
Depreciation	3,684,400	3,714,923
Taxes	1,437,019	1,244,611
Interest	2,325,951	2,237,459
Cost of Goods Sold	1,544,846	1,591,173
Other Interest and Deductions	53,826	39,628
<i>Total Operating Expenses</i>	74,213,033	64,968,500
Net Operating Margins	854,078	1,280,933
Other Income		
Interest Income	267,636	179,126
Other Income (Expense)	(13,304)	11,662
<i>Total Other Income</i>	254,332	190,788
W.F.E.C. and Other Capital Credits	4,342,217	2,439,470
<i>Net Margins Before Income Taxes</i>	5,450,627	3,911,191
Provision for Income Taxes	58,780	84,844
Patronage Capital Beginning of Year	51,092,403	47,944,732
Capital Credits Retired	(344,739)	(323,526)
Transfer to Other Equities	(371,439)	(355,150)
Patronage Capital End of Year	55,768,072	51,092,403
Comprehensive Income		
Net Margins for the Year	5,391,847	3,826,347
Amortize loss (gain) on APBO	(101,884)	(89,146)
Current Gain on APBO	83,017	89,953
<i>Comprehensive Income</i>	5,372,980	3,827,154

Statements audited annually

The financial statements for Cotton Electric Cooperative as of and for the years ended Dec. 31, 2014 and 2013, have been audited by Briscoe, Burke & Grigsby, LLP, an independent accounting firm. An unmodified opinion was issued for each year. Copies or the complete audited financial statements are on file at the cooperative's headquarters in Walters.

FIVE-YEAR OPERATING STATISTICS

As of December 31, 2014

	2010	2011	2012	2013	2014
Total Revenue	\$55,535,792	\$59,976,583	\$58,019,624	\$64,444,144	\$73,370,764
Cost of Purchased Power	37,663,324	40,914,902	39,404,997	45,951,455	54,405,248
Taxes	1,074,519	1,157,167	1,111,167	1,244,611	1,437,019
Operating Expense per Mile	10,377	11,166	10,929	12,358	14,112.32
Operating Income per Mile	11,320	11,902	11,574	13,035	14,244
Average Farm/Residential Annual Bill	1,612	1,741	1,598	1,683	1,830
Average Farm/Residential KWH Used	16,243	17,195	15,494	16,148	16,290
Miles of Line Energized	5,135	5,140	5,140	5,131	5,151
Density per Mile	4.20	4.22	4.24	4.28	4.29
New Services Connected	398	403	401	360	361
Services Retired	294	248	216	189	164

OPERATING EXPENSES - 2014



Corporate Headquarters

Cotton Electric Cooperative
226 N. Broadway
Walters, OK 73572
Phone: 580-875-3351
Website: CottonElectric.com

Duncan Office

1101 W. Oak
Duncan, OK 73533
Phone: 580-255-5065

Legal Counsel

J.W. Doolin
Lawton, Okla.

Independent Auditors

Briscoe, Burke & Grigsby, LLP
Tulsa, Okla.

Accounting Statistics

J.P. Goode
Accounting Supervisor

Management

Warren Langford
Chief Executive Officer

Jeff Simpson
Vice President

Jennifer Meason
Vice President

Mike Ottinger
Vice President



Cotton Electric contributes more than \$2.8M to area schools

There are many advantages to being a member of an electric cooperative, including the significant positive impact it can have on your community. Take taxes, for example.

It's hard to think of taxes in a positive way, but schools in the Cotton Electric Cooperative service area get a big boost each year from the gross receipts tax paid by its members. On a percentage basis, electric cooperatives contribute more tax dollars to local school districts than do other utilities.

In Oklahoma, a 2 percent gross receipts tax on revenue at both the wholesale and retail level is levied upon electric cooperatives in lieu of ad valorem tax. All but 5 percent of that goes directly back to school districts in the areas they serve.

Investor-owned utilities pay ad valorem taxes instead of a gross receipts tax. Only 58 percent of this tax goes to school districts within

which they own property. Municipal utilities contribute no tax money to public schools in Oklahoma.

The Oklahoma Tax Commission oversees the apportionment of the gross receipts tax. The amount paid to each school is based upon the number of miles of power lines that Cotton Electric Cooperative and Western Farmers Electric Cooperative have in each school district.

WFEC, Oklahoma's largest locally owned power supply system, is a generation and transmission cooperative owned by 22 distribution cooperatives, including Cotton Electric.

In 2014, more than \$2.8 million was distributed among the 31 schools served by CEC and WFEC. The table below shows the miles of line serving each district and an estimation of amounts contributed through the 2014 gross receipts tax.

2014 Gross Receipts Tax by School Districts

District	Cotton & WFEC Taxes	Cotton miles of line
Apache	38,671.92	4.51
Big Pasture	64,626.47	244.41
Bishop	304.08	1.15
Bray	98,684.37	134.37
Cache	126,666.52	292.89
Central	102,816.73	237.27
Chattanooga	219,258.05	335.30
Comanche	237,685.73	308.72
Davidson	25,470.98	33.45
Duncan	95,182.35	192.53
Elgin	139,553.84	310.13
Empire	93,030.30	238.27
Fletcher	58,682.23	26.90
Flower Mound	383.41	1.45
Fox	4,566.51	17.27
Frederick	66,210.29	9.07
Geronimo	56,153.30	163.46
Grandfield	49,932.75	188.84
Grandview	54,960.30	113.24
Indiahoma	72,062.45	146.42
Lawton	46,619.28	122.43
Marlow	61,649.12	233.15
Ringling	96,226.86	24.66
Rush Springs	145,825.04	149.83
Ryan	45,261.46	119.90
Sterling	70,982.12	165.07
Temple	65,066.65	234.47
Terral	18,340.05	69.36
Velma	325,887.64	510.02
Walters	213,954.04	299.61
Waurika	111,859.49	234.76
Totals:	2,806,574.33	5,162.91



CECF distributes nearly \$858,000 raised through Operation Round Up

Cotton Electric members are a generous group. Most of them participate in Operation Round Up, which rounds their power bills up to the nearest dollar each month. The funds collected by Operation Round Up are administered by the Cotton Electric Charitable Foundation (CECF). Since the program began in April 2004, nearly \$858,000 has been awarded to area organizations and individuals in need. Recipients are located within the Cotton Electric service territory.

At the 10-year mark in late 2014, CECF had issued 343 grants in an effort to improve the quality of life throughout the Cotton Electric service area.

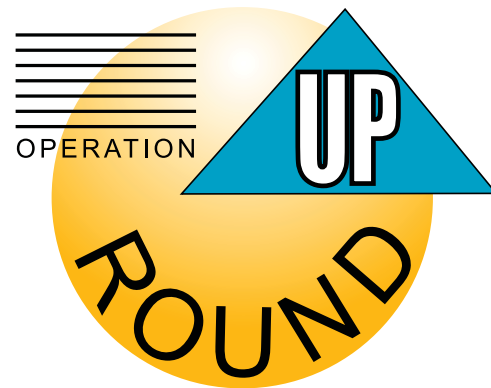
CECF awarded 40 grants totaling \$98,463 during the 2014-15 fiscal year. The foundation's fiscal year begins July 1 and ends June 30.

The seven largest grants awarded – \$5,000 – would have broad effects on communities throughout the service area. Schoolchildren in Velma have new playground equipment and the town of Indianhoma has an emergency generator. The police in Medicine Park have new dashboard and body cameras and Rockin' T Cure for Kids and American Red Cross have funds to aid for families. The Devol Volunteer Fire Department has a building addition and the VFD in Sugden has repaired a truck.

A total of \$17,300 in CECF grants benefited volunteer fire departments in the service area. Departments in Oakridge and Randlett also received grants for brush clearing equipment and wildland gear.

“Rural fire protection is an important issue for our members,” said Tim McCary, president of the Cotton Electric Cooperative’s board of trustees and CECF board member.

“Through Operation Round Up, more than \$233,600 has been contributed to volunteer



fire departments in our service area since 2004. These additional funds have helped them purchase new equipment and cope with increased fuel and maintenance costs.”

Six grants were modest, under \$1,000, but made a big difference, in education for the very young and not-so-young in the area. Indianhoma schools purchased incentive items and Fiesta in Fuqua had more school supplies to hand out. Head Start students have new books, Big Pasture school library has a reading rug and the Literacy Council in Duncan has bilingual dictionaries.

Another small grant helped purchase a freezer for Walters Community Food Pantry.

Grants ranging from \$1,000 to \$4,000 went to a variety of purposes from helping schools and students with equipment, refurbishment and crossing signs to kitchen equipment and document procurement for adults in difficult situations.

“The goal of CECF is to improve the lives of our members and we feel these contributions have made a difference in improving the quality of life in southwest Oklahoma,” said Warren Langford, Cotton Electric Cooperative’s CEO and CECF board member.

The foundation’s board of directors meets on a quarterly basis to review applications.



CECF Board of Directors



Carter Waid
President

Danny Marlett
Vice President

Carly Douglass
Sec./Treasurer



Warren Langford
Board Member

Tim McCary
Board Member



2014-15 CECF Grant Recipients

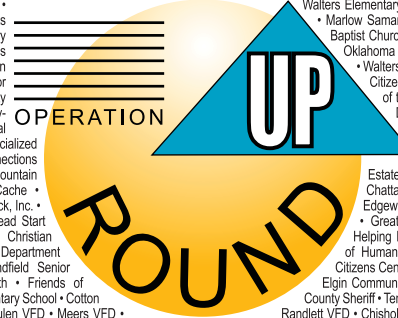
American Red Cross - Great Plains Service Center	\$5,000.00	Chisholm Trail Arts Council	\$1,000.00
Big Pasture School Library	\$600.00	Chisholm Trail Heritage Center	\$500.00
Christians Concerned	\$2,500.00	Devol Volunteer Fire Department	\$5,000.00
Comanche County Memorial Hospital EMS	\$2,500.00	Elgin Public Schools Early Childhood Center	\$2,500.00
Empire Public Schools	\$1,500.00	Great Plains Improvement Foundation	\$3,000.00
Indiahoma, Town of	\$5,000.00	Indiahoma Public Schools	\$500.00
Lovesick Ministries	\$2,000.00	Simmons Center	\$2,000.00
Sugden VFD	\$5,000.00	Velma-Alma Elementary PTO	\$5,000.00
Temple Area Food Pantry	\$1,500.00	Walters Community Food Pantry	\$900.00
Walters Public Schools	\$2,500.00	Waurika Chamber of Commerce	\$3,000.00
Bray-Doyle Academic Booster Club	\$2,000.00	Beautiful Day Foundation	\$2,000.00
Central High School	\$2,000.00	Duncan Area Literacy Council	\$790.00
Chattanooga, Town of	\$2,500.00	Duncan Little Theatre	\$3,500.00
Comanche High School	\$1,150.00	Elgin, City of	\$1,500.00
Marie Detty New Directions	\$1,680.00	Fiesta in Fuqua	\$500.00
Medicine Park Police Department	\$5,000.00	Oakridge VFD	\$3,800.00
Rockin' T Cure for Kids	\$7,898.00	Randlett VFD	\$3,500.00
Smart Start/United Way of Stephens County	\$800.00	Regional Food Bank of Oklahoma	\$2,000.00
Teen Court	\$1,345.00	Team CE	\$2,500.00
LaSill Optimist Club	\$2,500.00	Total distribution FY2013-14	\$98,463.00





Bray Missionary Baptist Church • United Way of Stephens County • Cotton County Graduated Sanctions • Youth Services of Stephens County • Cotton County Museum Association • Indianola Ag Boosters • Velma Lions Club • Duncan Kiwanis • Elgin National Junior Honor Society • Gabriel's House • Cache Ag Boosters • Stephens County Sheriff Reserves • Walters VFD • Teen Round-Up • Geronimo • American Red Cross • Geronimo Elementary • Christian Helping Hands • Corum VFD • Cox's Store VFD • Porter Hill VFD • Holy City of the Wichitas • First United Methodist Church of Walters • Walters High School • Duncan Senior Citizens Center • Lawton Food Bank • Gabriel's House • Geronimo Boy Scouts • Oasis of Hope • Youth Services of Stephens County • Medicine Park • Temple Chamber of Commerce • Cache Ag Boosters • FBC of Elgin • First Bank and Trust • United Way of Stephens County • Christian Family Counseling Center • Stephens County Christmas Dinner • Bray City Park • Cotton County Graduated Sanctions • Kidtopia Playground Project • Faxon • Prairie House Foundation • Central High School • Mark Twain PTO • Lawton-Ft. Sill Habitat for Humanity • Bray VFD • Chattanooga VFD • Devol VFD • Geronimo VFD • Hastings VFD • Oakridge VFD • Critter Creek Therapeutic Riding Fund • Duncan AMBUCS • Duncan Little Theatre • Learn and Serve Duncan • Stephens County Museum • Cotton County Sheriff Reserves • Big Pasture School Library • Marlow Senior Citizens Center • Empire VFD • Randlett VFD • Walters VFD • Wichita Mountain Estates VFD • Chisholm Trail Arts Council • Lawton Area Reading Council • Stephens County Humane Society • Veterans Services Center • United Way of Lawton-Fort Sill • Walters Middle School G&T Program • Roadback Inc. • C. Carter Crane Emergency Shelter • Walters Volunteer Ambulance Service • Elgin High School • Tri-County Nutrition Program • Addington VFD • Central High VFD • Meers VFD • Velma VFD • Learn and Serve Duncan • Specialized Alternatives for Families and Youth • Toy Shop of Duncan • Loco Cemetery • Stephens County Humane Society • Corum VFD • Grace Fellowship Church • Comanche County Nutrition Project • Bethel Road VFD • Edgewater Park VFD • Waurika VFD • Armed Services YMCA • J. Roy Dunning Children's Shelter • Walters Youth Skate Board Park • Youth Services of Stephens County • Pecan Cemetery Association • Duncan Senior Citizens Center • Dream Duncan's Destiny • Women's Haven • Empire VFD • Indianola VFD • Sterling VFD • Teen Court • Walters Food 4 Kids program • Chattanooga • Habitat for Humanity • Duncan • Hulén VFD • Medicine Park VFD • Terral VFD • Cotton County Free Fair Association • Holy City of the Wichitas • Geronimo Police Department • Central High P.T.O. • Cotton County Department of Human Services • Leadership Lawton Class XVII • Stephens County Sheriff Reserve • Jefferson County Hospital • Comanche VFD • Hospice of S.W. Oklahoma • Edgewater Park VFD • Paradise Valley VFD • Chisholm Trail Arts Council • Denton Cemetery • First United Methodist Church of Walters • Big Pasture School Library • Bray-Doyle Schools • Rush Springs Senior Citizen Center • Tri-County Nutrition Program • Lawton Food Bank • Bray VFD • Medicine Park VFD • Randlett VFD • Velma VFD • 3D Youth Coalition • Toy Shop of Duncan/Eagle Scout Project • Holy City of the Wichitas • Roadback, Inc. • Hulén VFD • Armed Services YMCA •

Walters Senior
Citizen Center • Empire VFD • Loco VFD
• Tri-County Interlocal Coop-Walters • Youth Services of
Stephens County • Velma Lions Club • Elgin High School Reading Initiative •
Duncan Rescue Mission • Habitat for Humanity • Duncan • Oakridge VFD • Temple VFD
• Hannah's Hearts • Hospice of S.W. Oklahoma • Stephens County Health Dept. • Chattanooga
• Cache Schools Alumni Association • Duncan Fire Department • Sterling Public Schools • Bray-Doyle
Schools • Cancer Centers of Southwest Oklahoma • Prevent Blindness Oklahoma • Meridian VFD • Duncan
Regional Hospital Health Foundation • Specialized Alternatives for Families and Youth • Medicine Park • Chattanooga
Schools • Empire Public Schools • Ryan Public Schools • Bray Senior Citizens Community Food Pantry • Christian Helping
Hands • Marlow Samaritans • Stephens County Humane Society • Stephens County Sheriff • Waurika VFD • Stephens County
Science Fair by Duncan Optimists • Central High Food Pantry • Armed Services YMCA • Cotton County Sheriff • Great Plains Improvement
Foundation • Jefferson County Hospital • Velma Ambulance Service • Chisholm Trail Arts Council • Duncan Public Library • Elgin Rodeo
Association • Holy City of the Wichitas • Velma • Christian Family Counseling Center • Christian Helping Hands • Chattanooga VFD • Comanche
VFD • Fiesta in Fuqua • Hearts That Care Volunteer Health Clinic • Stephens County Honor Guard • Comanche Public Schools • Bray-Doyle Schools
• Central High School • Duncan Regional Hospital Health Foundation • Armvets of Oklahoma • American Red Cross • Edgewater Park VFD • Geronimo
VFD • Specialized Alternatives for Families and Youth • Cotton County Department of Human Services • Velma Community Outreach Center •
Big Pasture Parent-Teacher Org. • Walters Elementary School • Marlow VFD • Chisholm Trail
Heritage Center • Hannah's Hearts • Marlow Samaritans • Temple Chamber of Commerce •
Women's Haven • Antioch Missionary Baptist Church • First Assembly of God, Elgin • Sterling
Elementary School • Prevent Blindness Oklahoma • Meridian VFD • Camp Lu-Jo KISMIF, Inc. •
New Hope Baptist Church West • Faxon • Walters Chamber of Commerce • Douglass Eastside
Senior Citizens Center • Duncan Senior Citizens Center • Lawton Food Bank • Edgewater
VFD • Elgin Community Library • Holy City Club • Citizens Center • Lawton Food Bank • Edgewater
Club • Big Pasture School Library • Holy City of the Wichitas • Medicine Park • Walters Rotary
High School • Duncan Regional Hospital • Doyle Band • Bray-Doyle Schools • Central
• Hastings VFD • Sterling VFD • Specialized Health Foundation • Delta Senior Nutrition
Court • OSU Extension Parent/Child Connections • Alternatives for Families and Youth • Teen
Devol VFD • Temple VFD • Wichita Mountain • Bethel Road VFD • Cox's Store VFD •
• First United Methodist Church of Cache • Estates VFD • Duncan Foursquare Gospel Church
Grandfield Ambulance Service • Roadback, Inc. • Chattanooga Public Schools • Christians Concerned •
• Elgin Rodeo Association • Marlow Head Start • Edgewater Park VFD • Porter Hill VFD • Chattanooga
Blindness Oklahoma • Corum VFD • Christian of Human Services • Big Pasture Public Schools •
Cache Masonic Lodge • Cotton County Department • Citizens Center • Jefferson County Hospital • Specialized
Comanche Academic Team • Grandfield Senior Elgin Community Library • Power Shop, Inc. • Indianola
Alternatives for Families and Youth • Friends of County Sheriff • Temple Area Food Pantry • Velma Community
Elementary School • Sterling Elementary School • Cotton • Randlett VFD • Chisholm Trail Heritage Center • Central High •
Outreach Center • Devol VFD • Hulén VFD • Meers VFD • Empire Schools & Boy Scout Troop #4417 • Bray-Doyle Baseball Team
Stephens County Humane Society • Comanche Middle School • Walters Chamber of Commerce • Central High •
• Fiesta in Fuqua • Chattanooga • Indianola • Leadership Duncan XVI • Duncan Senior Citizens Center • Prevent Blindness Oklahoma • United Way of
Stephens County • Camp Lu-Jo KISMIF, Inc. • Chisholm Trail Arts Council • First Christian Day Care • Girl Scouts of Western Oklahoma • Regional
Food Bank of Oklahoma • Specialized Alternatives for Families and Youth • Temple Chamber of Commerce • Central High Elementary School
• Walters Elementary School • Bray Senior Citizens Community Food Pantry • Empire VFD • Valleyview VFD • Teen Court • Tri-County
Interlocal Coop-Walters • Stephens County Christmas Dinner • Walters, City of • Waurika Chamber of Commerce • CU International Club
• Geronimo FFA • Indianola Public Schools • Indianola Public Schools • Velma-Alma Public School • Douglass Eastside Senior
Citizens Center • Duncan Community Residence • Chisholm Trail Heritage Center • Elgin 4-H Club • Smart Start/United Way
of Stephens County • Chattanooga • Cotton County 4-H • Stephens County Humane Society • Walters Food Pantry • Big
Pasture ISD • Empire Public Schools • Temple Elementary School • Walters Senior Citizen Center • Velma-Alma
FFA & 4-H Boosters • United Way of Southwest Oklahoma • Stephens County Crime Stoppers • Meers VFD
• Fiesta in Fuqua • Girl Scouts of Western Oklahoma • Regional Food Bank of Oklahoma • Waurika
Public Library • Friends of American Red Cross • Great Plains Service Center • Indianola
• Big Pasture School Library • Empire Public Schools • Walters Public Schools
• Christians Concerned • Comanche County Memorial Hospital EMS •
• Christians Concerned • Comanche County Memorial Hospital EMS •
Lovesick Ministries • Temple Area Food Pantry
• Sugden VFD



CECF grant recipients 2004-2014

CECF Statements of Financial Position

For the Years Ended June 30, 2015 and 2014
(Audit pending)

BALANCE SHEET

ASSETS

	2015	2014
Cash	\$21,456	\$51,993
Accounts Receivable-Related	7,447	8,772
Total Assets	28,903	60,765

LIABILITIES & NET ASSETS

Accounts Payable	828	15,768
Grants Payable	-	2,500

Total Liabilities 828 18,268

Unrestricted Funds Balance 28,075 42,497

Total Liabilities and Net Assets \$28,903 \$60,765

STATEMENT OF ACTIVITIES

REVENUES	2015	2014
Golf Tournaments	\$24,778	\$33,313
Consumer Contributions	84,125	76,051
Total Revenues	108,903	109,364

EXPENSES

Charitable Disbursements	98,463	82,001
Golf Tournament	16,153	21,282
Total Operating Expenses	114,606	103,283
Net Operating Income (loss)	(5,713)	6,081

OTHER INCOME/EXPENSES

Other Expenses	(8,709)	(3,563)
Total Other Income/Expenses	(8,709)	(3,563)

Increase (Decrease) in
Unrestricted Net Assets (14,422) 2,518
Beginning Unrestricted Net Assets 42,497 39,979

End Unrestricted Net Assets \$28,075 \$42,497